

SRD05

Rod type (With support guide)

● CE compliance

● Origin at non-motor side: Lead 6, 12



SRD05-S



SRD05-U

Ordering method

SRD05

Model

Lead

12: 12mm
06: 6mm
02: 2mm

Model

S: Straight model
U: Space-saving model (motor installed on top)

Brake

N: With no brake
B: With brake

Origin position

N: Standard
Z: Non-motor side

Bracket plate

N: No plate
H: With plate

Stroke

50 to 300
(50mm pitch)

Cable length

1L: 1m
3L: 3m
5L: 5m
10L: 10m

S

Controller

S: TS-S

I/O

NP: NPN
PN: PNP
CC: CC-Link
DN: DeviceNet

SD

Controller

SD: TS-SD

1

I/O cable

1: 1m

Note 1. When "2mm lead" is selected, the origin position cannot be changed (to non-motor side).

Note 2. The robot cable is flexible and resists bending.

Note 3. See P.61 for grease gun nozzles.

Note 4. See P.404 for DIN rail mounting bracket.

Basic specifications

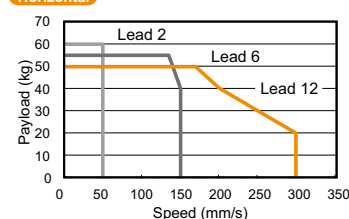
Motor	56 □ Step motor			
Repeatability (mm)	+/- 0.02			
Deceleration mechanism	Ball screw φ12 (Class C10)			
Ball screw lead (mm)	12	6	2	
Maximum speed ^{Note 1} (mm/sec)	300	150	50	
Maximum payload (kg)	Horizontal	50	55	60
	Vertical	8.5	18.5	28.5
Max. pressing force (N)	250	550	900	
Stroke (mm)	50 to 300 (50pitch)			
Lost motion	0.1mm or less			
Rotating backlash (°)	+/- 0.05			
Overall length (mm)	Horizontal	Stroke+276		
	Vertical	Stroke+316		
Maximum outside dimension of body cross-section (mm)	W56.4 × H71			
Cable length (m)	Standard: 1 / Option: 3, 5, 10			

Note 1. Maximum speed varies with the payload.

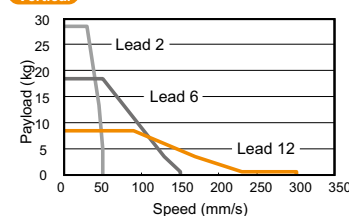
Refer to the "Speed vs. payload graphs" on the right.

Speed vs. payload graph

Horizontal



Vertical

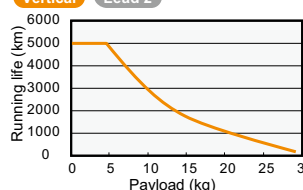


Running life

5000 km on models other than shown below.

Running life of only the model shown below becomes shorter than 5000 km depending on the payload, so check the running life curve.

Vertical Lead 2



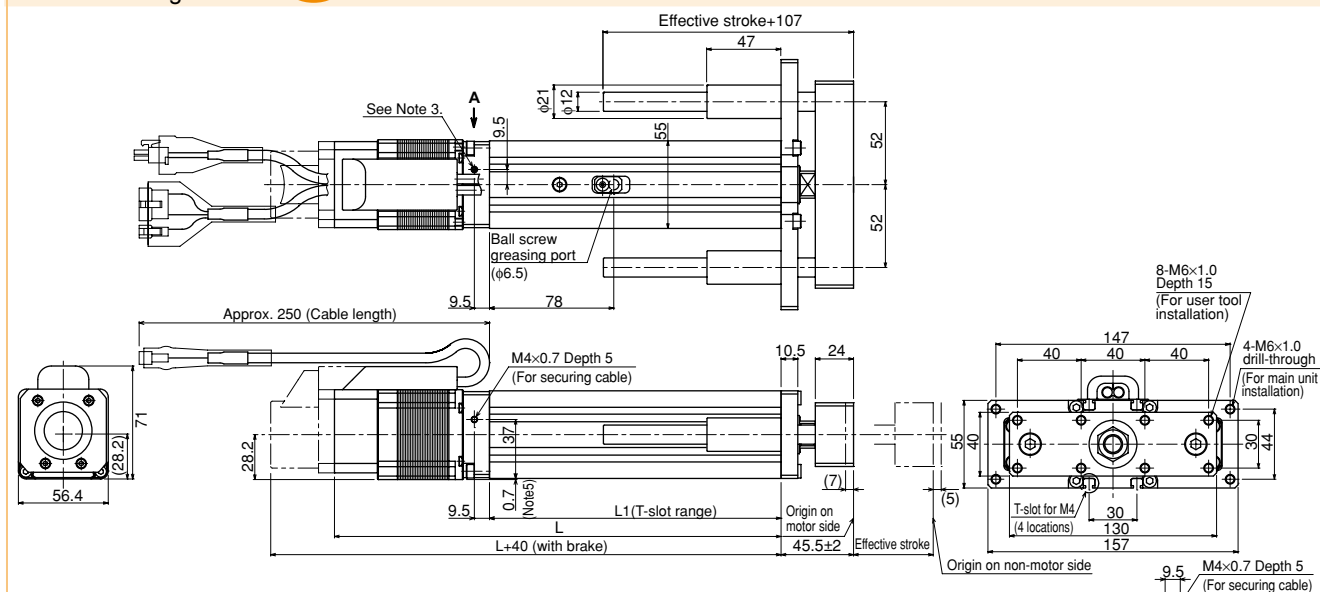
Note. See P.61 for running life distance to life time conversion example.

Controller

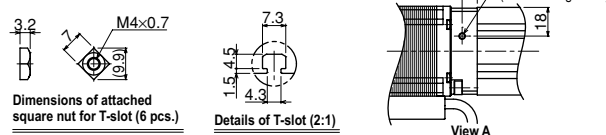
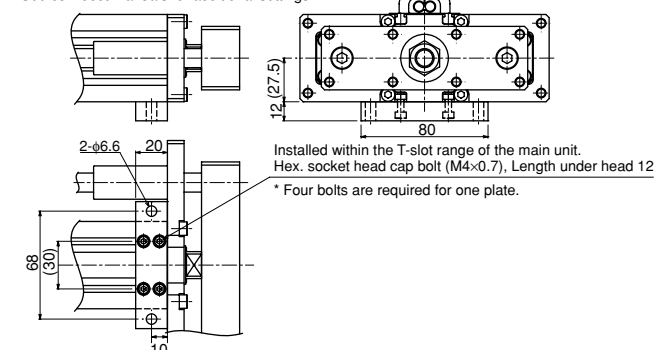
Controller	Operation method	Controller	Operation method
TS-S	I/O point trace / Remote command	TS-SD	Pulse train control

SRD05 Straight model

S



Option: Horizontal installation plate (foot)

* Contents of option: Plate, 2 pcs., Nut, 8 pcs.
See our robot manuals for additional settings.

Effective stroke	50	100	150	200	250	300
L1	183	233	283	333	383	433
L	280.5	330.5	380.5	430.5	480.5	530.5
Weight (kg)	3.1	3.6	4.1	4.5	5.0	5.5

Note1. It is possible to apply only the axial load.

Use the external guide together so that any radial load is not applied to the rod.

Note2. For lead 2mm specifications, the origin on the non-motor side cannot be set.

Note3. When the lead is 2mm, this dimension is 27mm.

Note4. When running the cables, secure cables so that any load is not applied to them.

Note5. Remove the M4 hex. socket head cap set bolts and use them to secure the cables. (Effective screw thread depth 5)

Note6. The cable's minimum bend radius is R30.

Note7. Take great care as the outer case of the motor projects from the bottom of the main unit.

Note8. Models with a brake will be 0.2kg heavier.

Note9. Distance to mechanical stopper.

SRD05 Space-saving model (motor installed on top) **U**