

YK600XGL

Standard type: Medium type

- Arm length 600mm
- Maximum payload 5kg

Ordering method

YK600XGL - 150				RCX240S					BB	
Model	Z axis stroke 150: 150mm	Tool flange No entry: None F: With tool flange	Hollow shaft No entry: None S: With hollow shaft	Cable 3L: 3.5m 5L: 5m 10L: 10m	Controller	Usable for CE No entry: Standard E: CE marking	Expansion I/O ^{Note 1} N, P: Standard I/O 16/8 N1, P1: 40/24 N2, P2: 64/40 N3, P3: 88/56 N4, P4: 112/72	Network option No entry: None CC: CC-Link DN: DeviceNet PB: Profibus EN: Ethernet YC: YC-Link ^{Note 2}	iVY System No entry: None VY: iVY (Vision) TR: iVY+Light +Tracking LC: iVY+Light	Battery BB: 4 pcs

Note 1. Use N to N4 when NPN is selected on the I/O board, and P to P4 when PNP is selected.
Note 2. Available only for the master.

Specifications

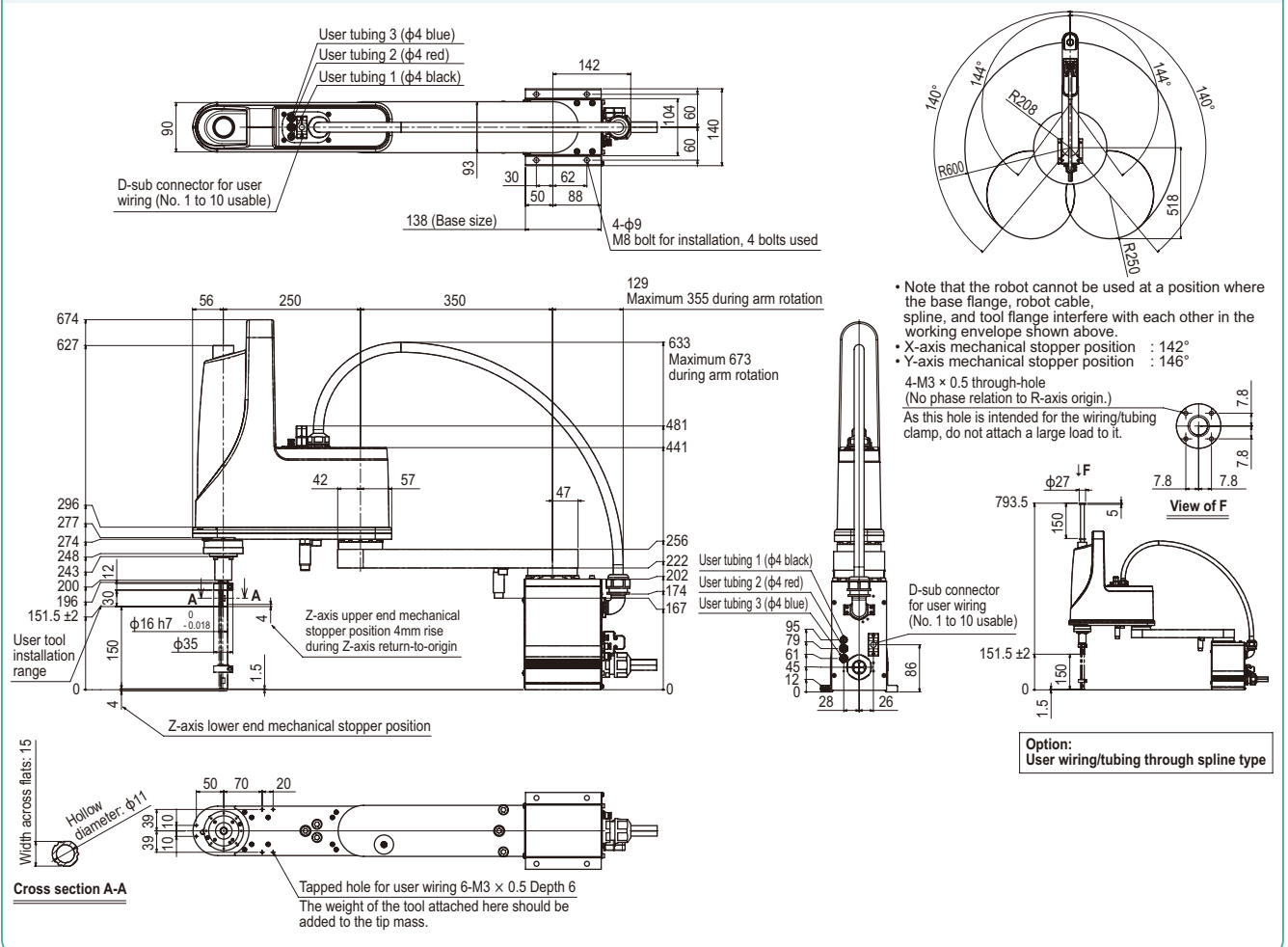
Axis specifications	X-axis	Y-axis	Z-axis	R-axis
Arm length (mm)	350	250	150	-
Rotation angle (°)	+/-140	+/-144	-	+/-360
AC servo motor output (W)	200	150	50	100
Deceleration mechanism	Speed reducer	Harmonic drive	Harmonic drive	Ball screw
	Transmission method	Direct-coupled		
Repeatability ^{Note 1} (XYZ: mm) (R: °)	Motor to speed reducer	Direct-coupled		
	Speed reducer to output	Direct-coupled		
Maximum speed (XYZ: m/sec) (R: °/sec)	+/-0.01	+/-0.01	+/-0.01	+/-0.004
Maximum payload (kg)	5			
Standard cycle time: with 2kg payload ^{Note 2} (sec)	0.63			
R-axis tolerable moment of inertia ^{Note 3} (kgm ²)	0.05kgm ² (0.5kgfcm ²)			
User wiring (sq × wires)	0.2 × 10			
User tubing (Outer diameter)	φ4 × 3			
Travel limit	1.Soft limit 2.Mechanical stopper (X,Y,Z axis)			
Robot cable length (m)	Standard: 3.5 Option: 5,10			
Weight (kg)	22			

Note 1. This is the value at a constant ambient temperature. (X,Y axes)
Note 2. When reciprocating 300mm in horizontal and 25mm in vertical directions.
Note 3. There are limits to acceleration coefficient settings.

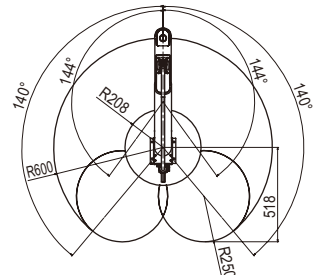
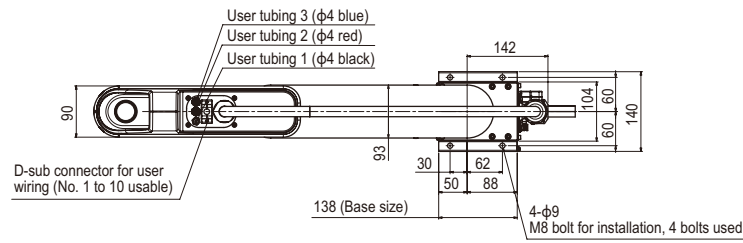
Controller

Controller	Power capacity (VA)	Operation method
RCX240S	1000	Programming / I/O point trace / Remote command / Operation using RS-232C communication

YK600XGL



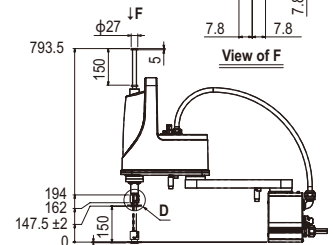
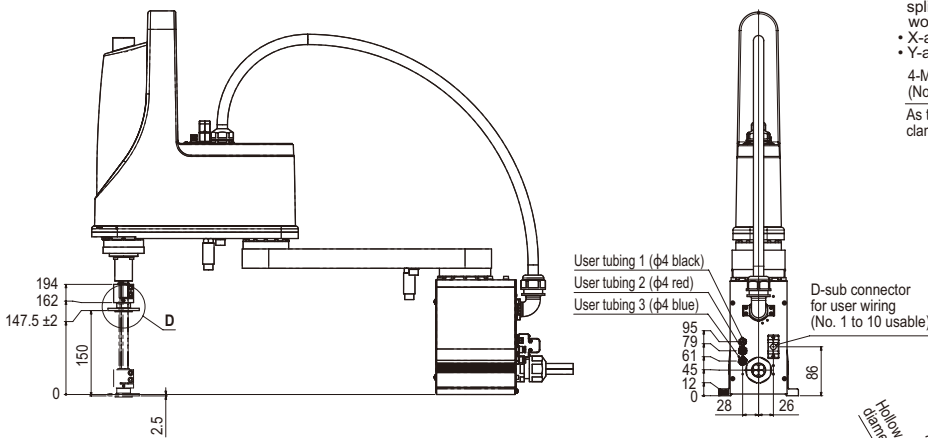
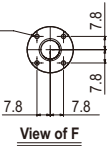
YK600XGL Tool flange mount type



- Note that the robot cannot be used at a position where the base flange, robot cable, spline, and tool flange interfere with each other in the working envelope shown above.
- X-axis mechanical stopper position : 142°
- Y-axis mechanical stopper position : 146°

4-M3 × 0.5 through-hole
(No phase relation to R-axis origin.)

As this hole is intended for the wiring/tubing clamp, do not attach a large load to it.



Option:
User wiring/tubing through spline type

